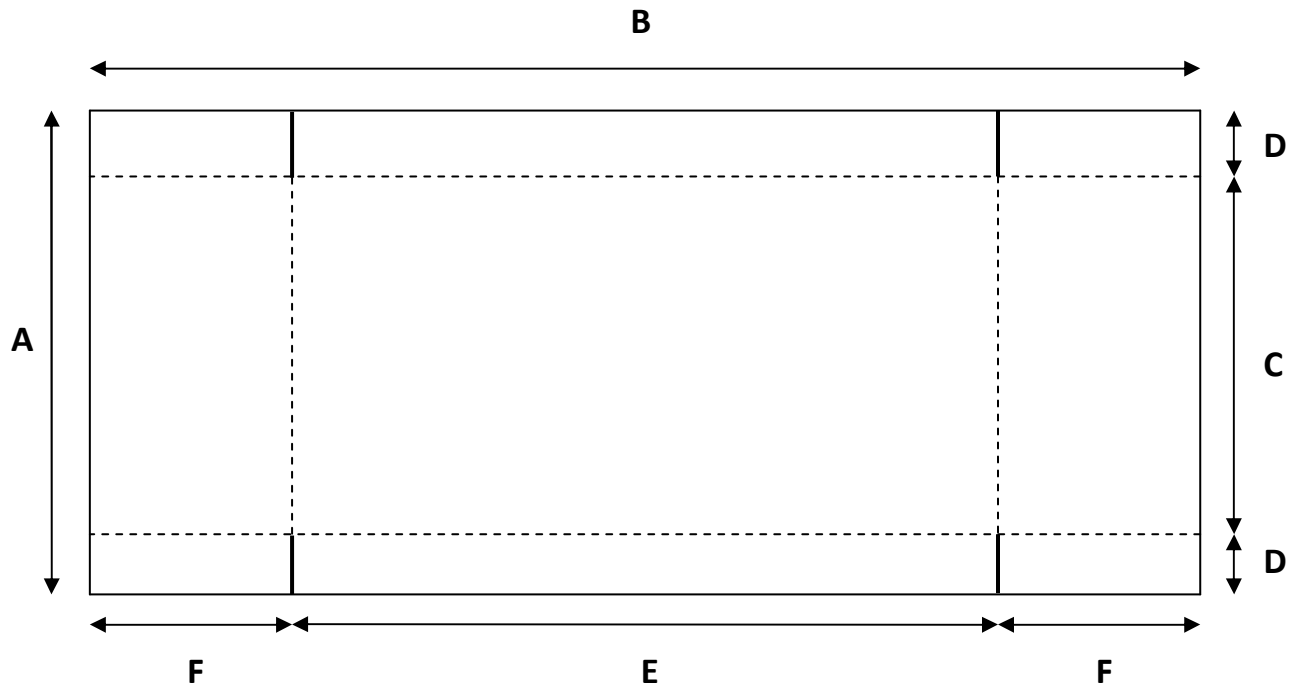




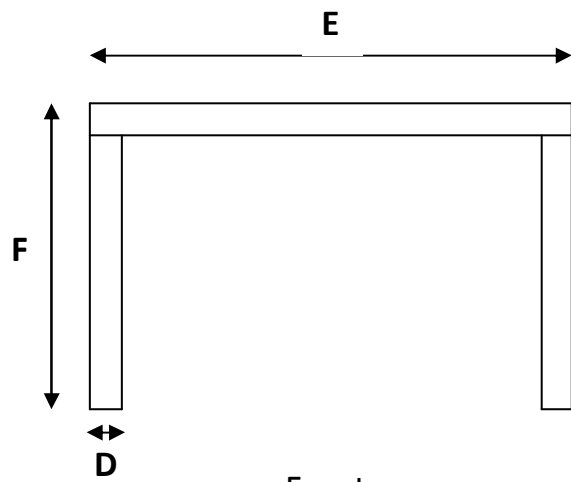
Designed by Vicki Pelton
www.curiousbunny.com

Bunny Box

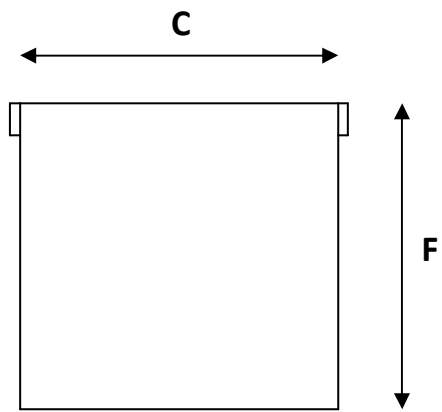
Bunny Box



Cardboard less likely to tear if ridges of corrugations in this direction



Front



Side

———— = Cut

----- = Fold

Bunny Box

This is easy to make out of one piece of corrugated cardboard.
Be sure cardboard has no tape nor staples on it.

Cut to size (dimensions given in inches) & cut 4 slits as indicated.
To fold, hold against sharp edge of counter.
Fold each flap all the way it will go (so the 2 sides of cardboard touch).
This makes a nice sharp edge.
Clamp together without glue.
Then remove clamps on each end, glue & re-clamp.
Be sure to use glue that is not toxic to animals.
When dry, remove excess glue.

Does not have a floor so cannot be soiled by untrained rabbits.

| Adults | | | | | | |
|------------------------|----|----|----|----|----|----|
| Rabbit's Weight (lbs.) | 2 | 4 | 6 | 8 | 10 | 14 |
| A | 12 | 13 | 17 | 20 | 23 | 25 |
| C | 8 | 9 | 13 | 16 | 19 | 21 |
| D | 2 | 2 | 2 | 2 | 2 | 2 |
| B | 22 | 25 | 30 | 31 | 32 | 38 |
| E | 8 | 9 | 10 | 11 | 12 | 14 |
| F | 7 | 8 | 10 | 10 | 10 | 12 |

| Litters | | | | | | |
|------------|---------|---------|---------|---------|---------|---------|
| Age Number | 1-4 wks | 1-4 wks | 1-4 wks | 4-8 wks | 4-8 wks | 4-8 wks |
| A | 9 | 10 | 12 | 16 | 16 | 16 |
| C | 7 | 8 | 10 | 12 | 12 | 12 |
| D | 1 | 1 | 1 | 2 | 2 | 2 |
| B | 21 | 24 | 24 | 34 | 36 | 39 |
| E | 9 | 12 | 12 | 14 | 16 | 19 |
| F | 6 | 6 | 6 | 10 | 10 | 10 |

litter values are for babies from a 5 lb. mother
If make D flap 4", can then cut half circle around opening for a different look

Designed by Vicki Pelton
www.curiousbunny.com